



# Main Building - Ground Floor



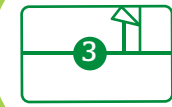
### Self catering kitchen

- 2 x Fridge
- 2 x Cooker
- 1 x Induction hob
- 2 x Sinks

No access areas



# Main Building - First Floor



Triple bed

## **EXCLUSIVE HIRE: sleeps up to 38**

Assuming all bed spaces used, with three people in triple beds.  
Includes single pull out bed

## **GROUP HIRE: sleeps up to 33**

Assuming one person per mattress. Includes single pull out bed



# The Barton Building

## EXCLUSIVE HIRE: sleeps up to 21

Assuming all bed spaces used, with three people in triple beds.

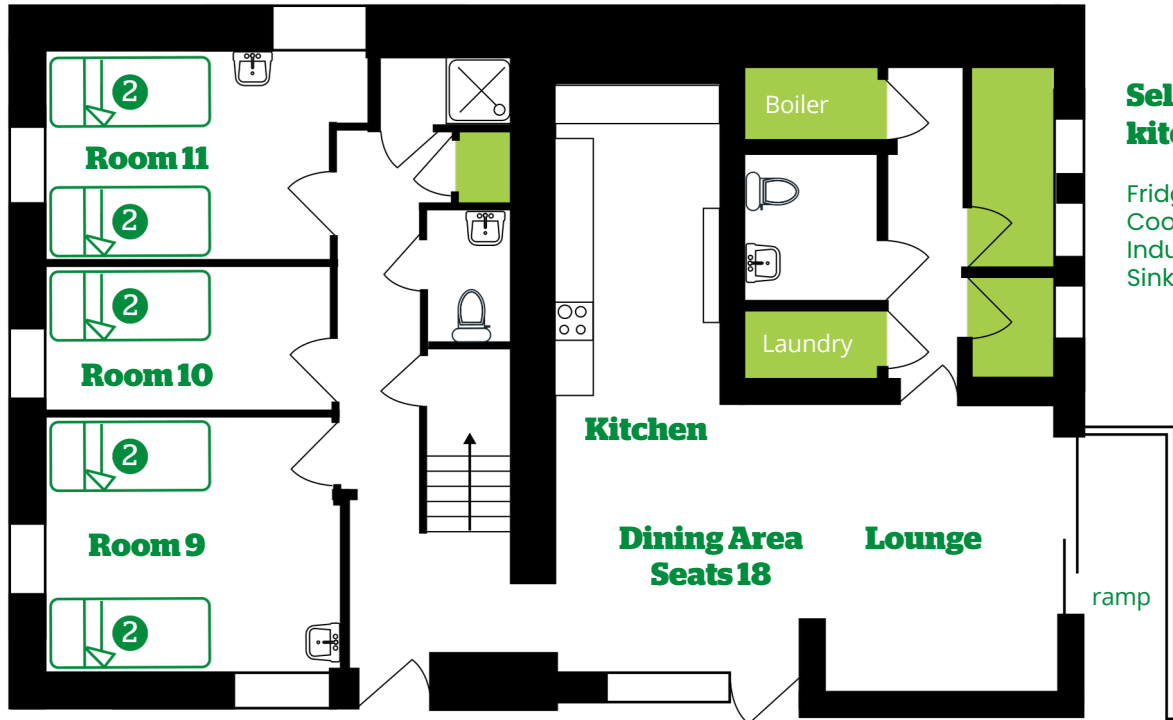
## GROUP HIRE: sleeps up to 20

Assuming one person per mattress.



No access areas

Ground Floor



First Floor

